

METAL FABRIC & ATTACHMENT

GUIDE

LANDSCAPE INTERIORS

Li

MESH DEFENSE

Md

MESH MLLANEOUS

M

MESH FX

Fx

PARKADE

P

SOLUCENT

S

C A M B R I D G E
ARCHITECTURAL

To ensure that architects and designers choose mesh patterns and attachments that are compatible upon installation, Cambridge provides a simple user-friendly process which effectively integrates every aspect of a metal fabric system for its intended application.

To ensure that you specify the right Cambridge Architectural solution for your specific application and design vision, it's important to specify your solution following these easy steps:

1 Identify an application category — Determine which application category best matches your needs.

Li **LANDSCAPEINTERIORS** — creates and sculpts space: clads walls, ceilings, columns, doors and counters

Md **MESHDEFENSE** — provides safety, security or protection from high winds

M **MESHHELLANEOUS** — custom applications for your project

Fx **MESHFX** — delivers elements of corporate identity using light, etching or painting

P **PARKADE** — architectural mesh cladding material for open parking structures

S **SOLUCENT** — shades the sun, can be utilized as part of a daylighting system

2 Select an attachment compatible with your solution — Look for the symbol you select when reviewing attachments on the following pages.

Attachments are used to mount the mesh and have a big impact on its appearance.

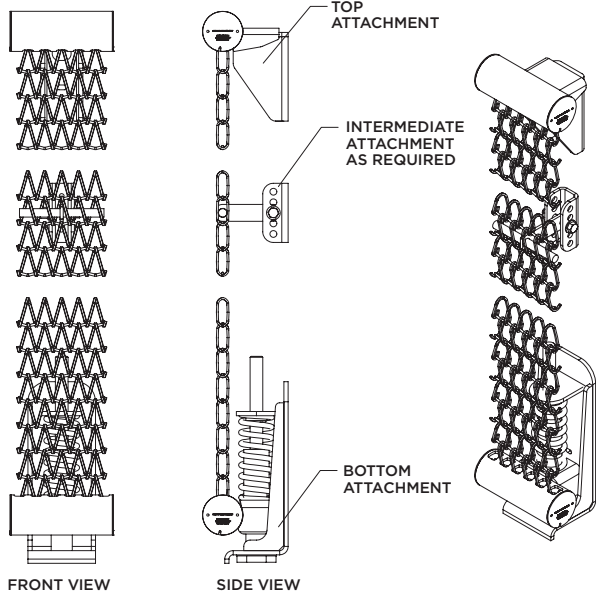
3 Choose a metal fabric pattern compatible with your attachment — Use the table to the right to determine mesh pattern and attachment compatibility.

The metal fabric pattern is what the weave looks like and how it behaves.

We're open to your ideas — If you have a specific customized requirement, Cambridge Architectural will be happy to work with you to meet your needs.

		ATTACHMENTS							
		Eclipse™	Scroll™	Velocity™	Curtain	Railflex™	Panel	Tableau	U Frame
FLEXIBLE MESH									
5	Ribknit	●	●		●				
5	Stripe	●	●	●	●	●			
6	Slink	●	●		●	●			
6	Shade	●	●	●	●	●			
7	Mid-Balance	●	●	●	●	●			
7	Scale	●	●	●	●	●			
8	Balance	●	●	●		●			
8	Pellican	●	●	●		●			
9	Matte	●	●						
9	Rope	●	●						
10	Braid	●	●	●					
10	Vine	●	●						
11	Aztec	●	●			●			
11	Cubist	●	●	●		●			
12	Strand		●						
12	Ritz						●		●
13	Tweed						●		●
RIGID MESH									
13	Chaos							●	●
14	Infinity							●	●
14	Plank							●	●
15	Plait							●	●
15	Ridge							●	●
16	Bead							●	●
16	Graph							●	●
17	Plaza						●		●
17	Villa						●	●	●
18	Tile						●	●	●
18	Tidal						●		●
19	Channel						●		●
19	Circuit						●		●
20	Stipple						●		●
20	Sawgrass						●		●

ECLIPSE™ ATTACHMENT



Eclipse tension attachment hardware provides tailored edges for expanses of flexible metal fabric. Elegant, custom cut apertures receive the metal fabric ends in tubing that is integrated into a bracket and structural support design. The tube provides a visual reveal between panel lengths, and tube sizes may vary to emphasize or de-emphasize the attachment. Eclipse is appropriate for lengths of metal fabric up to 100'.

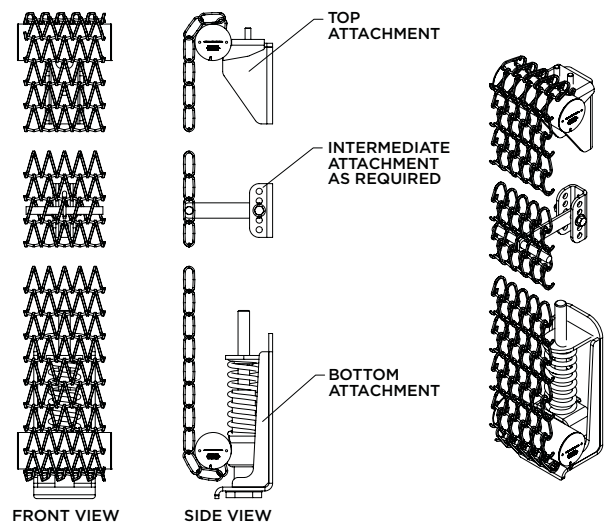
COMPATIBLE MESH

- Aztec
- Balance
- Braid
- Cubist
- Matte
- Mid-Balance
- Pellican
- Ribknit
- Rope
- Scale
- Shade
- Slink
- Stripe
- Vine

* Cambridge Architectural Eclipse attachment hardware is patent pending.



SCROLL™ ATTACHMENT



Scroll tension attachment hardware keeps the focus on the metal fabric by hiding the attachment behind it. Scroll conceals the bracket that attaches to the structural support. Scroll uniquely grips the metal fabric, holding it in tension. Scroll is appropriate for lengths of metal fabric up to 100'.

COMPATIBLE MESH

- Aztec
- Balance
- Braid
- Cubist
- Matte
- Mid-Balance
- Pellican
- Ribknit
- Rope
- Scale
- Shade
- Slink
- Strand
- Stripe
- Vine

* Cambridge Architectural Scroll attachment hardware is patent pending.



VELOCITY™ ATTACHMENT

Md
M
Fx
P
S

Velocity tension attachment hardware is engineered specifically for coastal areas that are subject to hurricane force winds. The certified attachment is designed to re-tension the metal fabric automatically after high wind conditions have passed. The attachment can also be specified to protect property and people from materials that are propelled at a building during high wind conditions.

COMPATIBLE MESH

- Balance
- Braid
- Cubist
- Mid-Balance
- Pelican
- Scale
- Shade
- Stripe



*Call Cambridge at 866.806.2385 for more details on Velocity attachment hardware.

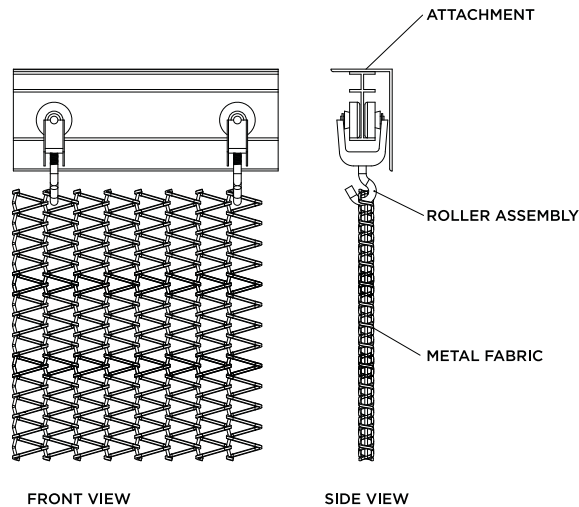
CURTAIN ATTACHMENT

Li
M
Fx
S

Curtain attachment hardware attaches flexible metal fabric to hooks and permits it to roll smoothly along the track length as a window treatment or draping space divider. Flexible metal fabrics are hung sideways to maximize a draping effect. This attachment hardware can also be specified for motorized operation, where the curtain of metal fabric is opened or closed with the touch of a button.

COMPATIBLE MESH

- Mid-Balance
- Ribknit
- Scale
- Shade
- Slink
- Stripe

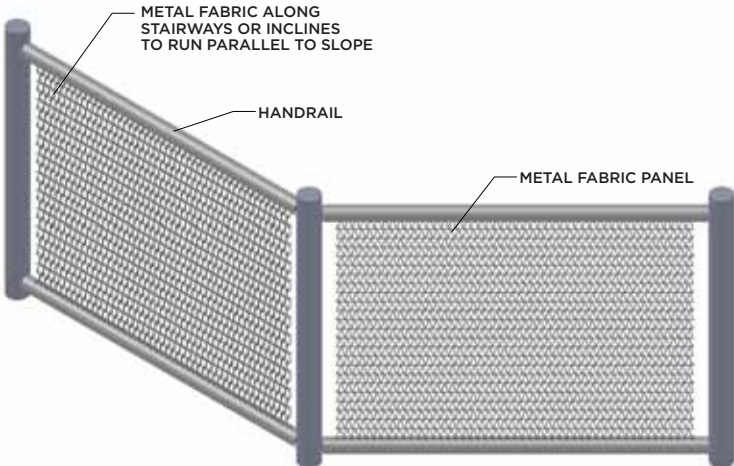


RAILFLEX™ ATTACHMENT



Railflex tension attachment hardware is specifically designed for handrail systems. The ends of flexible metal fabric panels are concealed in handrail tubing, allowing for a seamless transition from rail to flexible mesh. Custom-cut apertures receive the metal fabric in the handrail tubing which is integrated into a bracket and structural support design.

Md
M



COMPATIBLE MESH

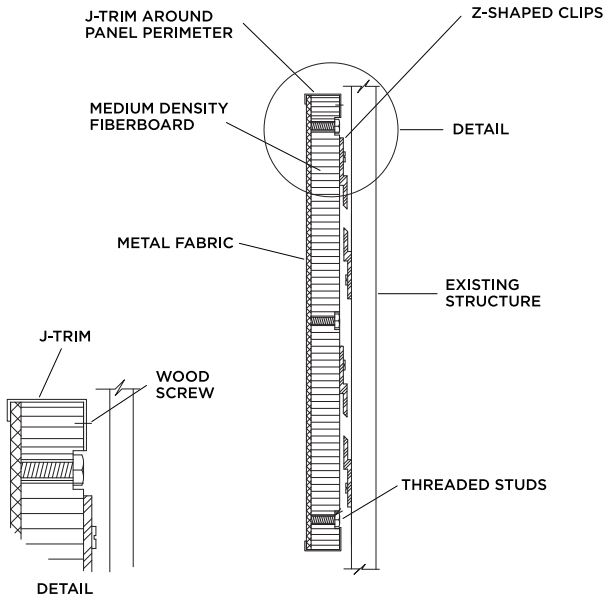
- Aztec
- Balance
- Cubist
- Mid-Balance
- Pellican
- Scale
- Shade
- Slink
- Stripe



PANEL ATTACHMENT

Panel attachment hardware fastens closed metal fabric to a substrate such as Medium Density Fiberboard (MDF). Z-clips join panels to the substructure.

Li
M
Fx



COMPATIBLE MESH

- Channel
- Circuit
- Plaza
- Ritz
- Sawgrass
- Stipple
- Tidal
- Tile
- Tweed
- Villa

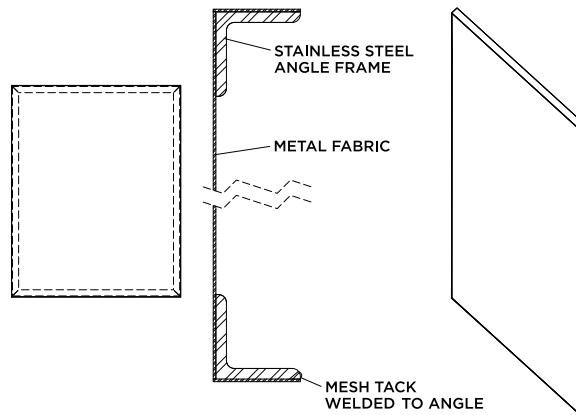
TABLEAU ATTACHMENT

Li
M
Fx
S

Tableau attachment hardware folds metal fabric around the corners of an angle frame for an elegant concealed attachment.

COMPATIBLE MESH

- Bead
- Chaos
- Graph
- Infinity
- Plait
- Plank
- Ridge
- Tile
- Villa



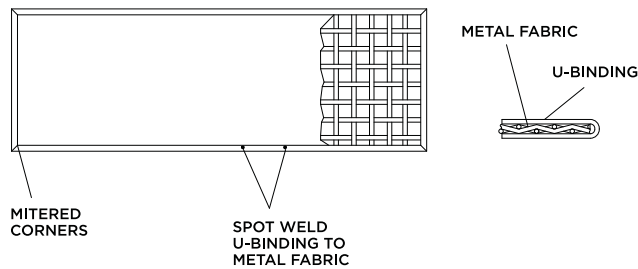
U FRAME ATTACHMENT

Li
Md
M

With U Frame attachment hardware, metal fabric is tack welded to a u-binding frame with mitered corners that are welded and ground smooth for a brushed finish.

COMPATIBLE MESH

- Bead
- Channel
- Chaos
- Circuit
- Graph
- Infinity
- Plait
- Plank
- Plaza
- Ridge
- Ritz
- Sawgrass
- Stipple
- Tidal
- Tile
- Tweed
- Villa





RIBKNIT METAL FABRIC

FLEXIBLE

Material:	Stainless Steel
Open Area:	73%
Weight:	0.8 lbs./sq. ft.
Max. Width:	120"



STRIPES[®] METAL FABRIC

FLEXIBLE

Material:	Stainless Steel
Open Area:	54%
Weight:	1.70 lbs./sq. ft.
Max. Width:	240"

SLINK METAL FABRIC

FLEXIBLE

Material:	Stainless Steel
Open Area:	30%
Weight:	2.2 lbs./sq. ft.
Max. Width:	120"



SHADE METAL FABRIC

FLEXIBLE

Material:	Stainless Steel
Open Area:	43%
Weight:	0.94 lbs./sq. ft.
Max. Width:	240"





MID-BALANCE METAL FABRIC

FLEXIBLE

Material:	Stainless Steel
Open Area:	52%
Weight:	1.57 lbs./sq. ft.
Max. Width:	240"



SCALE METAL FABRIC

FLEXIBLE

Material:	Stainless Steel
Open Area:	62%
Weight:	1.94 lbs./sq. ft.
Max. Width:	240"

BALANCE METAL FABRIC

FLEXIBLE

Material:	Stainless Steel
Open Area:	55%
Weight:	2.01 lbs./sq. ft.
Max. Width:	240"

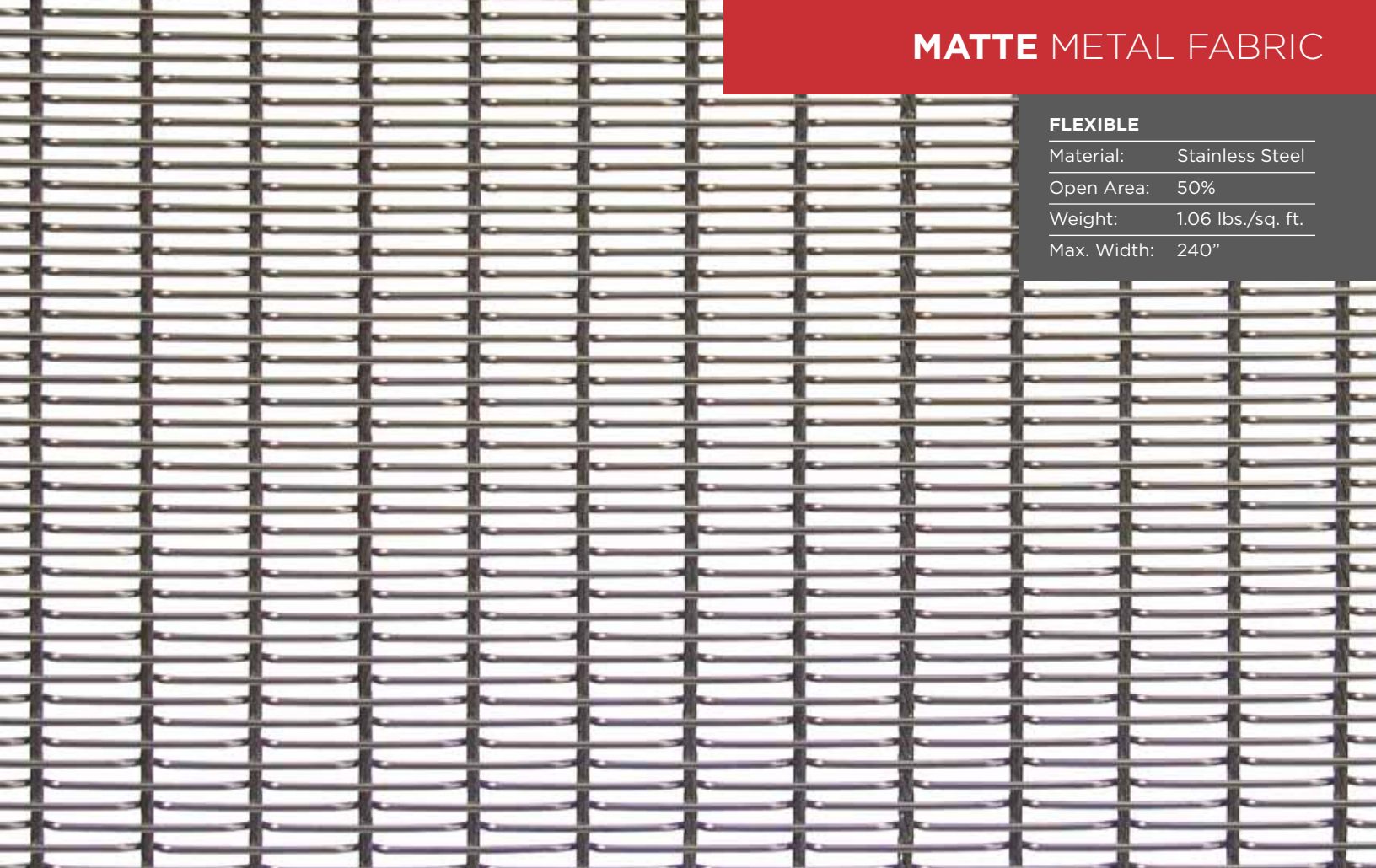


PELLICAN METAL FABRIC

FLEXIBLE

Material:	Stainless Steel
Open Area:	36%
Weight:	2.5 lbs./sq. ft.
Max. Width:	240"





MATTE METAL FABRIC

FLEXIBLE

Material:	Stainless Steel
Open Area:	50%
Weight:	1.06 lbs./sq. ft.
Max. Width:	240"



ROPE METAL FABRIC

FLEXIBLE

Material:	Stainless Steel
Open Area:	42%
Weight:	2.25 lbs./sq. ft.
Max. Width:	240"

BRAID METAL FABRIC

FLEXIBLE

Material:	Stainless Steel
Open Area:	65%
Weight:	1.80 lbs./sq. ft.
Max. Width:	240"



VINE METAL FABRIC

FLEXIBLE

Material:	Stainless Steel
Open Area:	32%
Weight:	1.50 lbs./sq. ft.
Max. Width:	120"





NEW AZTEC METAL FABRIC

FLEXIBLE

Material:	Stainless Steel
Open Area:	90%
Weight:	0.8 lbs./sq. ft.
Max. Width:	48"



CUBIST METAL FABRIC

FLEXIBLE

Material:	Stainless Steel
Open Area:	74%
Weight:	2.21 lbs./sq. ft.
Max. Width:	144"

STRAND METAL FABRIC

FLEXIBLE

Material:	Stainless Steel
Open Area:	76%
Weight:	0.75 lbs./sq. ft.
Max. Width:	120"

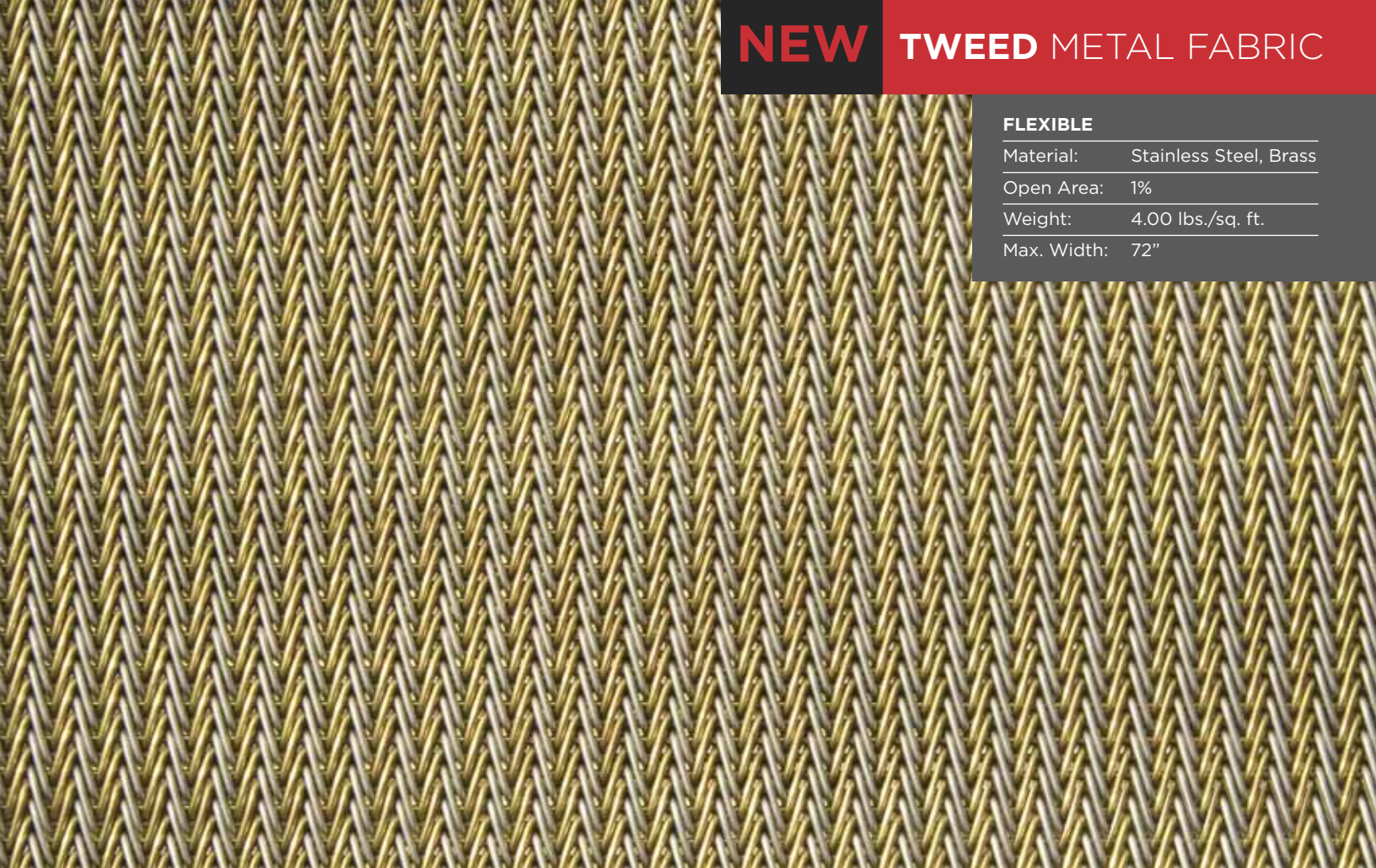


RITZ METAL FABRIC

FLEXIBLE

Material:	Stainless Steel
Open Area:	1%
Weight:	3.90 lbs./sq. ft.
Max. Width:	120"



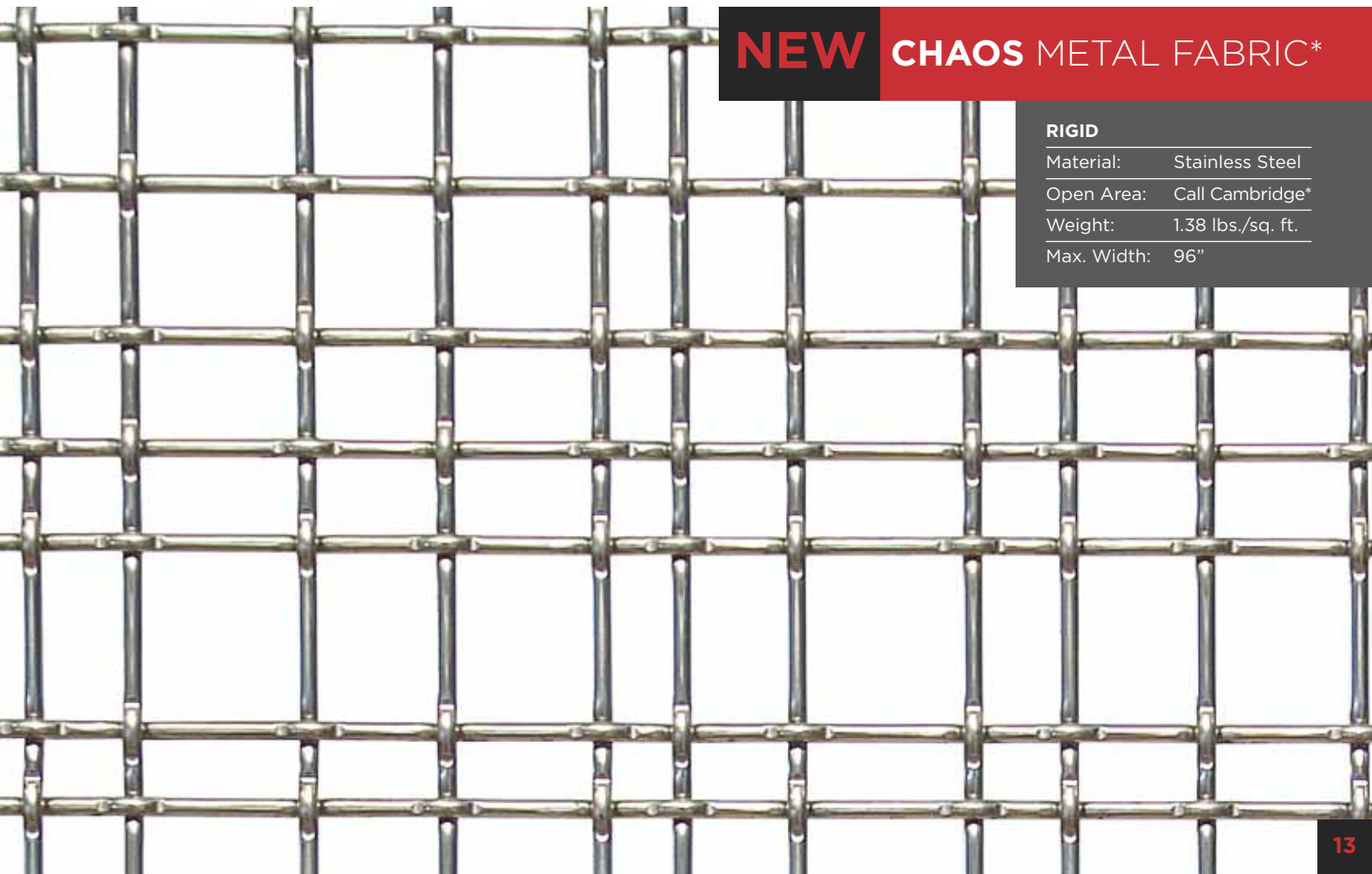


NEW TWEED METAL FABRIC

FLEXIBLE

Material:	Stainless Steel, Brass
Open Area:	1%
Weight:	4.00 lbs./sq. ft.
Max. Width:	72"

*Call Cambridge at 866.806.2385 to learn how to modify Chaos mesh pattern.



NEW CHAOS METAL FABRIC*

RIGID

Material:	Stainless Steel
Open Area:	Call Cambridge*
Weight:	1.38 lbs./sq. ft.
Max. Width:	96"

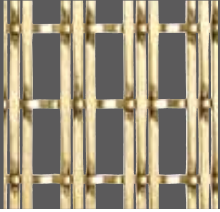
INFINITY™ 507A METAL FABRIC

RIGID

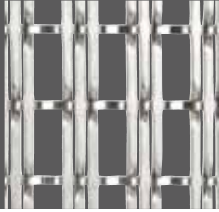
Material:	Stainless Steel, Brass
Open Area:	58%
Weight:	2.00 lbs./sq. ft.
Max. Width:	50"
Thickness:	0.225"



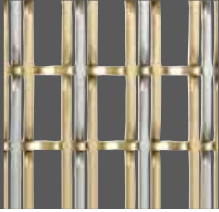
INFINITY 504A



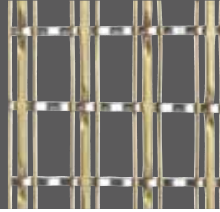
INFINITY 506A



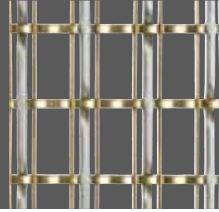
INFINITY 508A



INFINITY 512A



INFINITY 516A



PLANK METAL FABRIC

RIGID

Material:	Stainless Steel
Open Area:	56%
Weight:	1.30 lbs./sq. ft.
Max. Width:	96"
Thickness:	0.225"

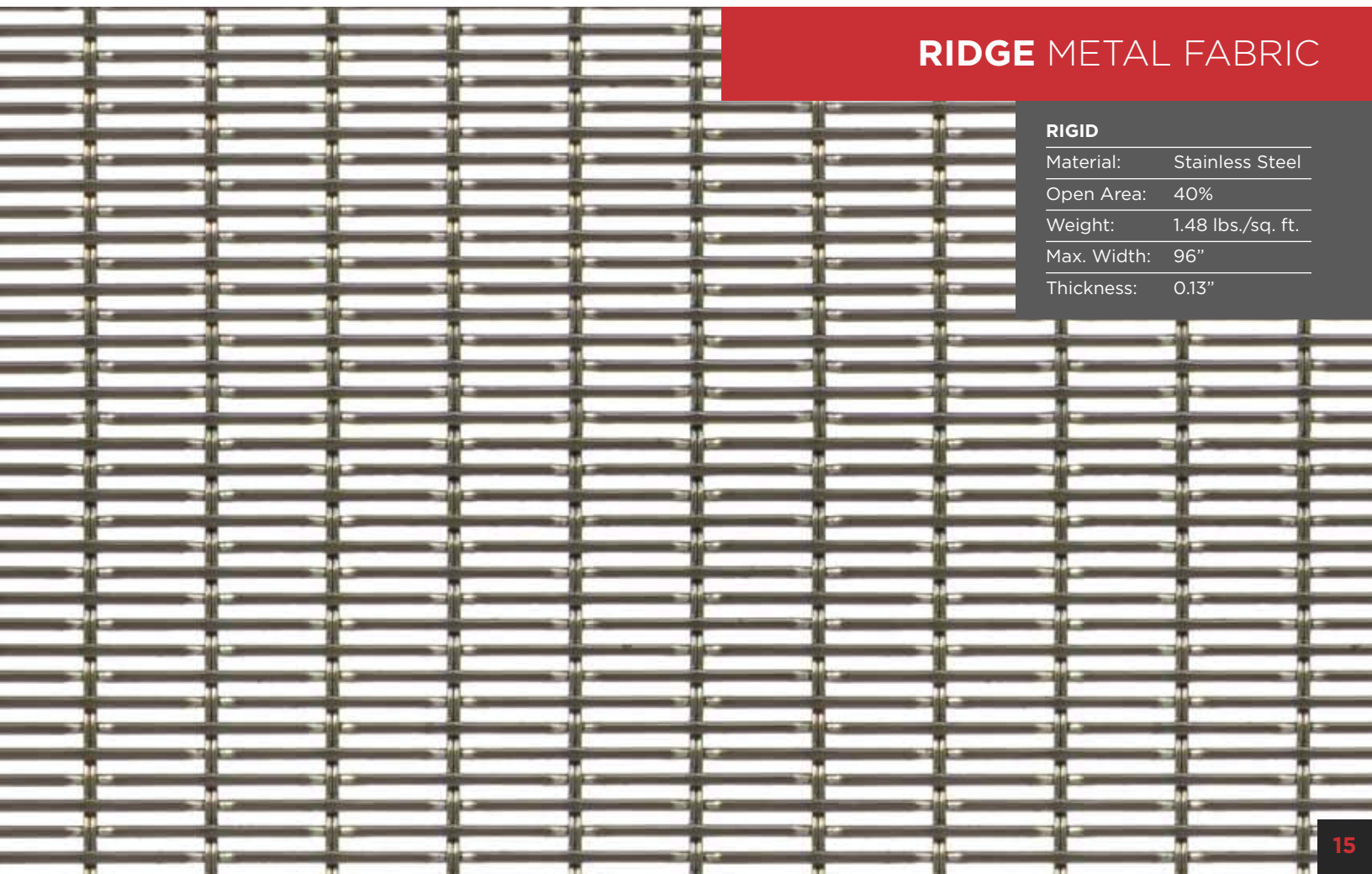




PLAIT METAL FABRIC

RIGID

Material:	Stainless Steel
Open Area:	64%
Weight:	2.03 lbs./sq. ft.
Max. Width:	96"
Thickness:	0.365"



RIDGE METAL FABRIC

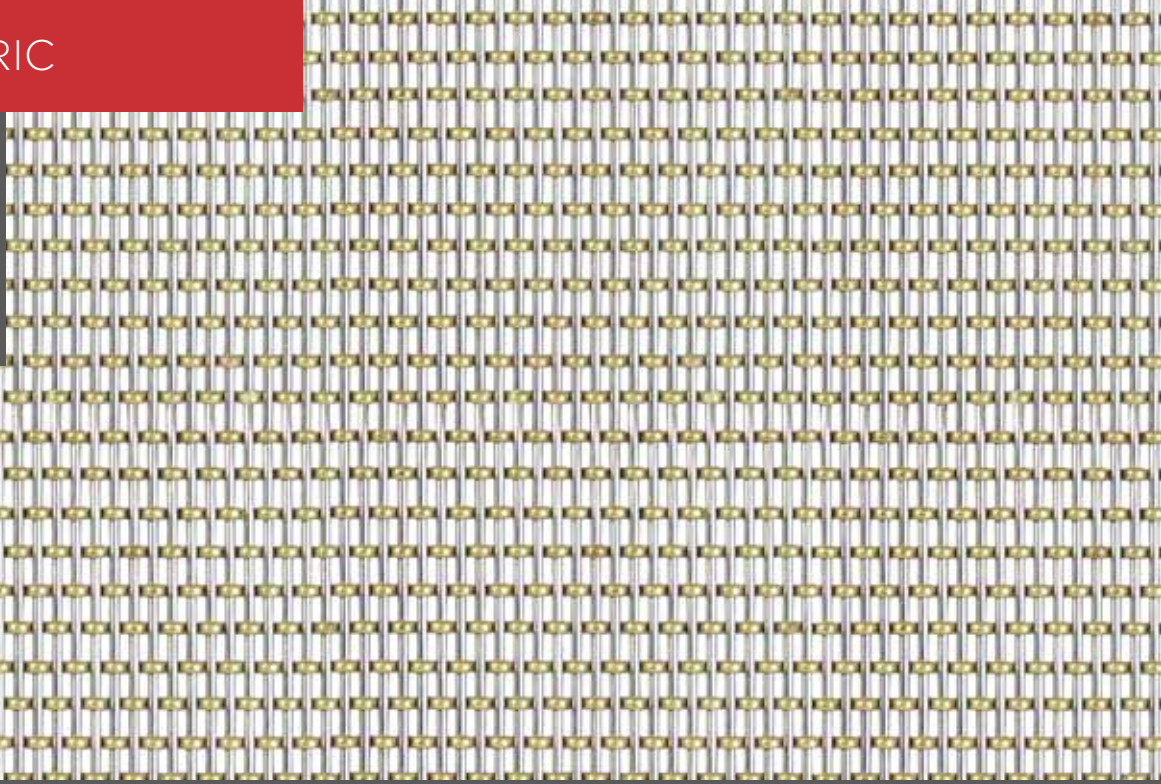
RIGID

Material:	Stainless Steel
Open Area:	40%
Weight:	1.48 lbs./sq. ft.
Max. Width:	96"
Thickness:	0.13"

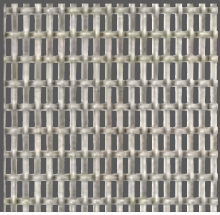
BEAD METAL FABRIC

RIGID

Material:	Stainless Steel, Brass
Open Area:	32%
Weight:	1.81 lbs./sq. ft.
Max. Width:	72"
Thickness:	0.135"



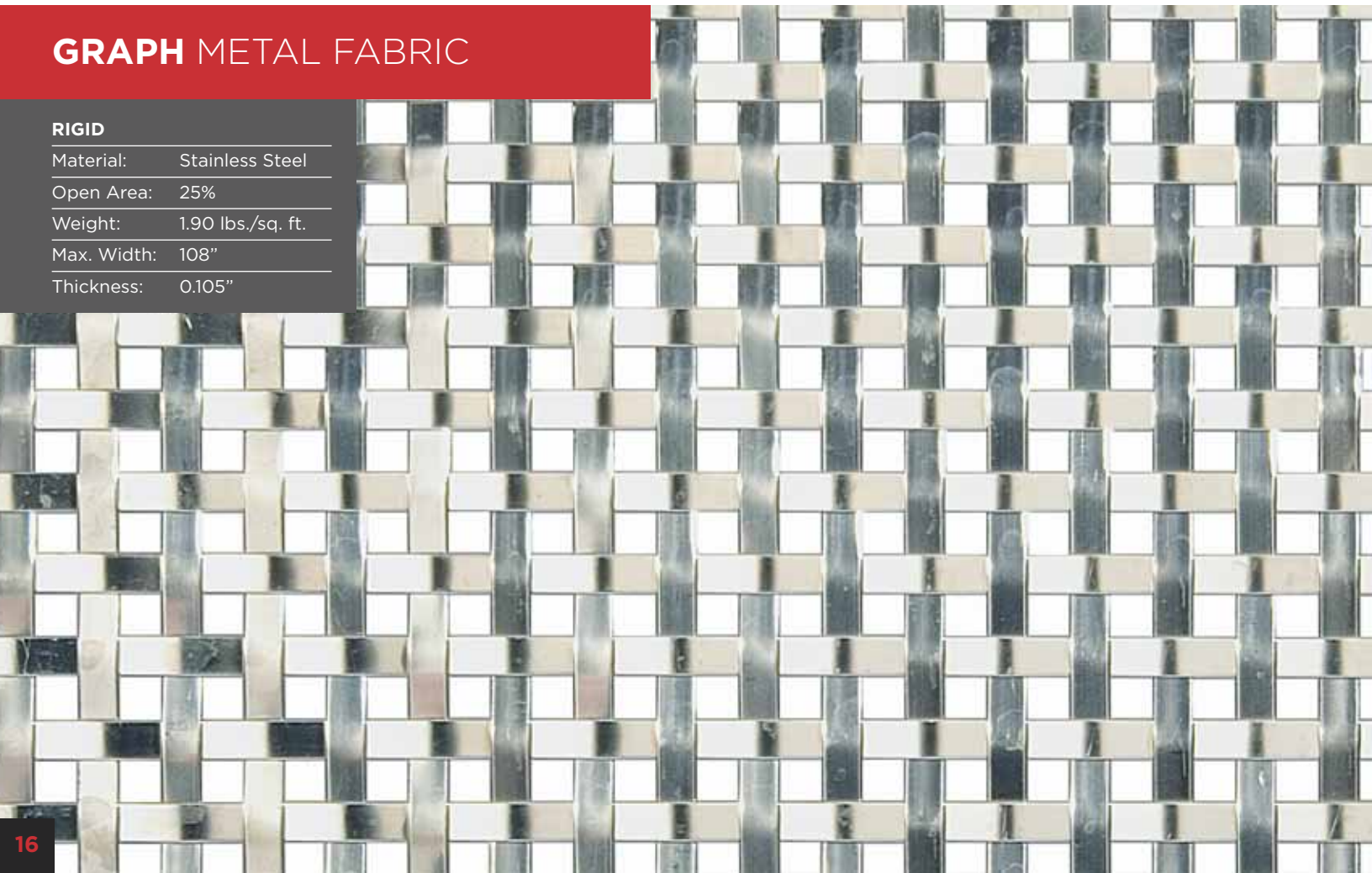
BEAD 880S



GRAPH METAL FABRIC

RIGID

Material:	Stainless Steel
Open Area:	25%
Weight:	1.90 lbs./sq. ft.
Max. Width:	108"
Thickness:	0.105"



PLAZA 75A METAL FABRIC

RIGID

Material:	Stainless Steel, Brass
Open Area:	18%
Weight:	3.70 lbs./sq. ft.
Max. Width:	50"
Thickness:	0.225"

PLAZA 70A



PLAZA 75B



PLAZA 78A



VILLA METAL FABRIC

RIGID

Material:	Stainless Steel
Open Area:	0%
Weight:	2.1 lbs./sq. ft.
Max. Width:	60"
Thickness:	0.155"

TILE 50B METAL FABRIC

RIGID

Material: Stainless Steel,
Brass, Copper

Open Area: 6%

Weight: 3.9 lbs./sq. ft.

Max. Width: 50"

Thickness: 0.125"



TILE 35A

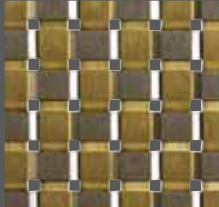
TILE 35B

TILE 50A

TILE 52A

TILE 52B

TILE 501A



TIDAL 96A METAL FABRIC

RIGID

Material: Stainless Steel, Brass

Open Area: 0%

Weight: 3.70 lbs./sq. ft.

Max. Width: 50"

Thickness: 0.193"



TIDAL 79B

TIDAL 79BB

TIDAL 95A

TIDAL 108A



CHANNEL 29SS METAL FABRIC

RIGID

Material:	Stainless Steel, Brass
Open Area:	0%
Weight:	4.00 lbs./sq. ft.
Max. Width:	108"
Thickness:	0.21"

CHANNEL 29K



CHANNEL 135A

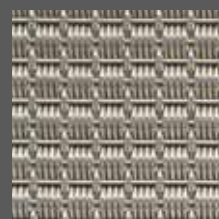


CIRCUIT 114A METAL FABRIC

RIGID

Material:	Stainless Steel, Brass
Open Area:	0%
Weight:	3.38 lbs./sq. ft.
Max. Width:	50"
Thickness:	0.196"

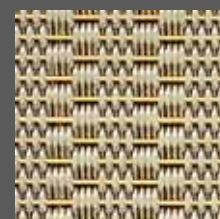
CIRCUIT 105A



CIRCUIT 108A



CIRCUIT 113A



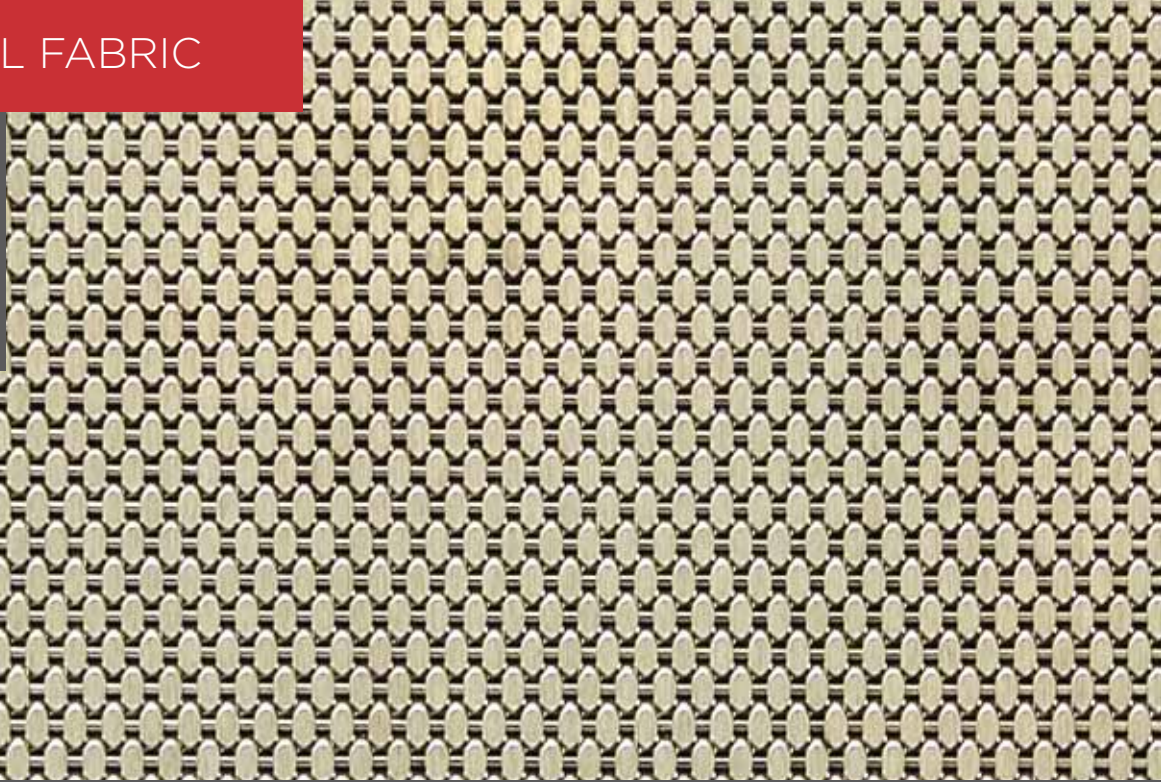
CIRCUIT 141A



STIPPLE 19A METAL FABRIC

RIGID

Material:	Stainless Steel, Brass
Open Area:	0%
Weight:	3.57 lbs./sq. ft.
Max. Width:	50"
Thickness:	0.13"



STIPPLE 11A



STIPPLE 11B



STIPPLE 12A



STIPPLE 12B



STIPPLE 19B



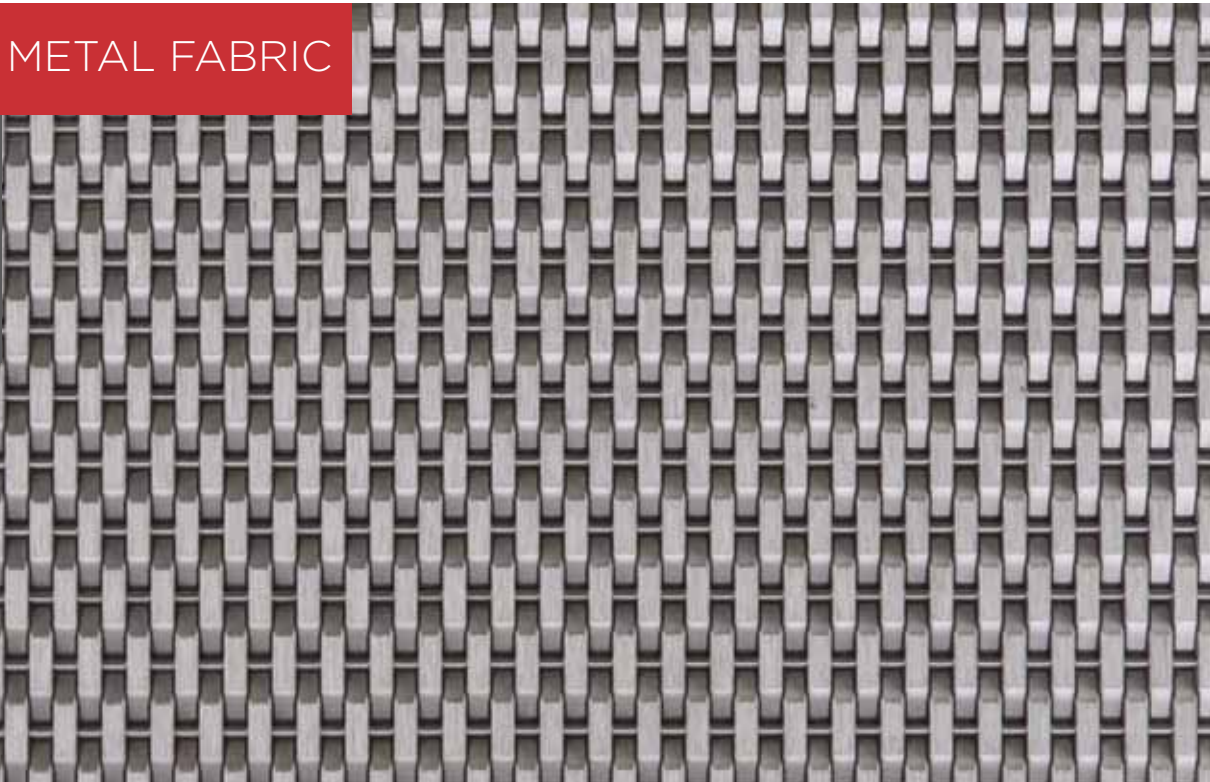
STIPPLE 19H



SAWGRASS 88A METAL FABRIC

RIGID

Material:	Stainless Steel
Open Area:	0%
Weight:	3.57 lbs./sq. ft.
Max. Width:	50"
Thickness:	0.13"



SAWGRASS 32A



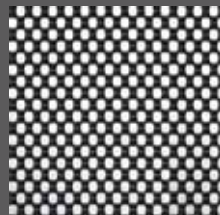
SAWGRASS 33B



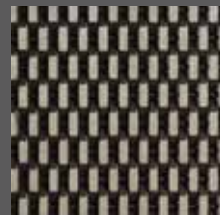
SAWGRASS 51A



SAWGRASS 51B



SAWGRASS 88B



SUPPORT

Designers specify Cambridge Architectural mesh systems for their aesthetic flexibility. Owners endorse them for their functionality. And Cambridge Architectural supports the architects/engineers and contractors who manage the installation details that make it all work so beautifully.

Cambridge Architectural's team of engineers and designers help you quickly turn your concept into a workable, functional reality by defining your application, identifying the appropriate attachment methods and selecting the compatible palette of metal fabric patterns. Assistance includes complete installation details, framing design, load characteristics and other pertinent information. Approved drawings, as well as on-site project management, can also be offered depending upon the project's scope and requirements.

GREEN

As an active member of the United States Green Building Council (USGBC), Cambridge Architectural is committed to promoting methods, technology and products resulting in environmentally responsible and healthy buildings that do not sacrifice profit. To accomplish this, certain select Cambridge Architectural staff members – our Green Team – receive ongoing education and training related to these important issues.

The Green Team develops and promotes Cambridge Architectural mesh systems that can meet the most current credit requirements of LEED® for New Construction (Version 2.2) Green Building Rating System. Since many credit categories require integration with other products and systems, our Green Team provides consultation and direction on a project-by-project basis to maximize LEED credit.

Cambridge Architectural manufacturing processes meet or exceed standards for safety, storm/ground water protection, resource management, waste water reduction, and recycling program for raw materials.

For more information on Cambridge Architectural LEED credit categories visit www.cambridgearchitectural.com



Cambridge Architectural
105 Goodwill Road
Cambridge, MD 21613

Toll Free 866 806 2385
Fax 410 901 4979
sales@cambridgearchitectural.com

WWW.CAMBRIDGEARCHITECTURAL.COM



LANDSCAPEINTERIORS, MESHDEFENSE, MESHELLANEOUS, MESHFX, PARKADE, SOLUCENT
are trademarks of Cambridge Architectural. All rights reserved.